

## ROOF NOTES

ROOF:  
TRAY ROOFING:  
Stratco Superdek profile roofing. Colorsteel Endura finish. Selected colour.  
0.55BMT Colorsteel endura eave flashing required to NZBC E2/AS1

ROOF UNDERLAY:  
Solitex Mento 3000 roof and extasana external wraps.

DOWNSPIPES  
Generally 65mmØ Colorsteel downpipes on matching holderbats.

FASCIA  
Stratco Concept fascia - Colour to match roofing

SPOUTING  
Stratco Quad Spouting. Brackets at 600mm crs with snow straps - Colour to match roofing  
5621mm² Capacity

SOFFIT LINING  
6mm fibre cement sheet close butt jointed. Paint finished.

Spouting Capacity Calculation:

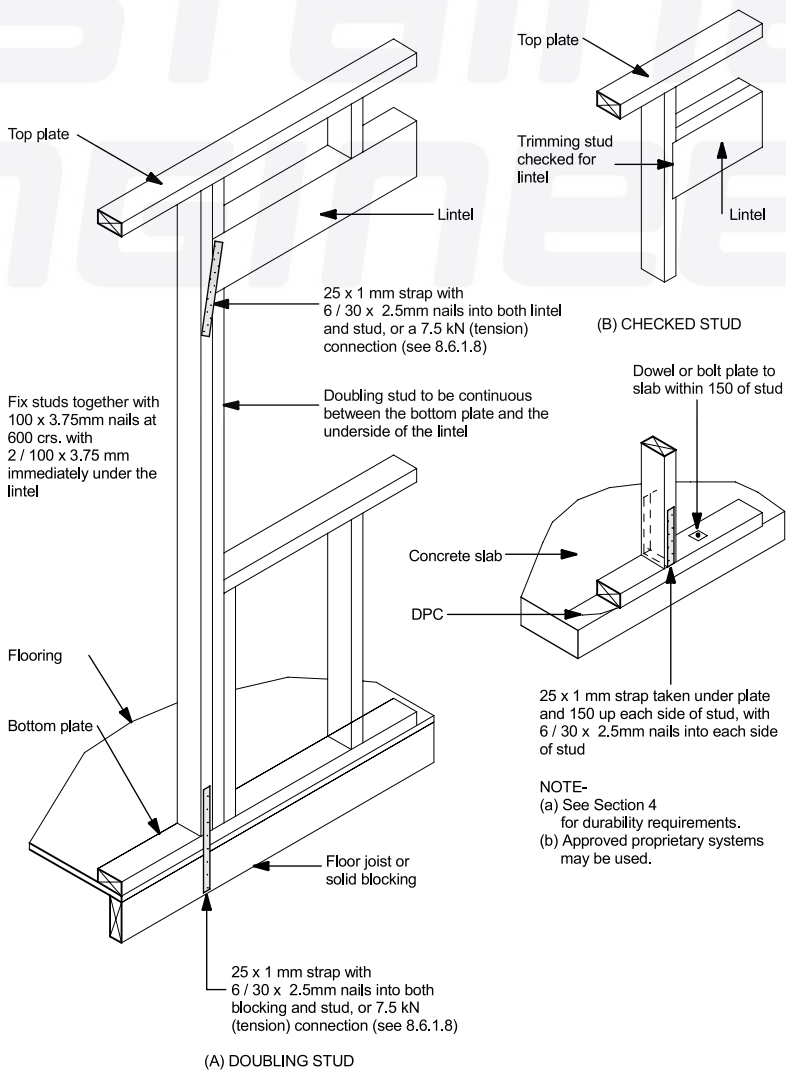
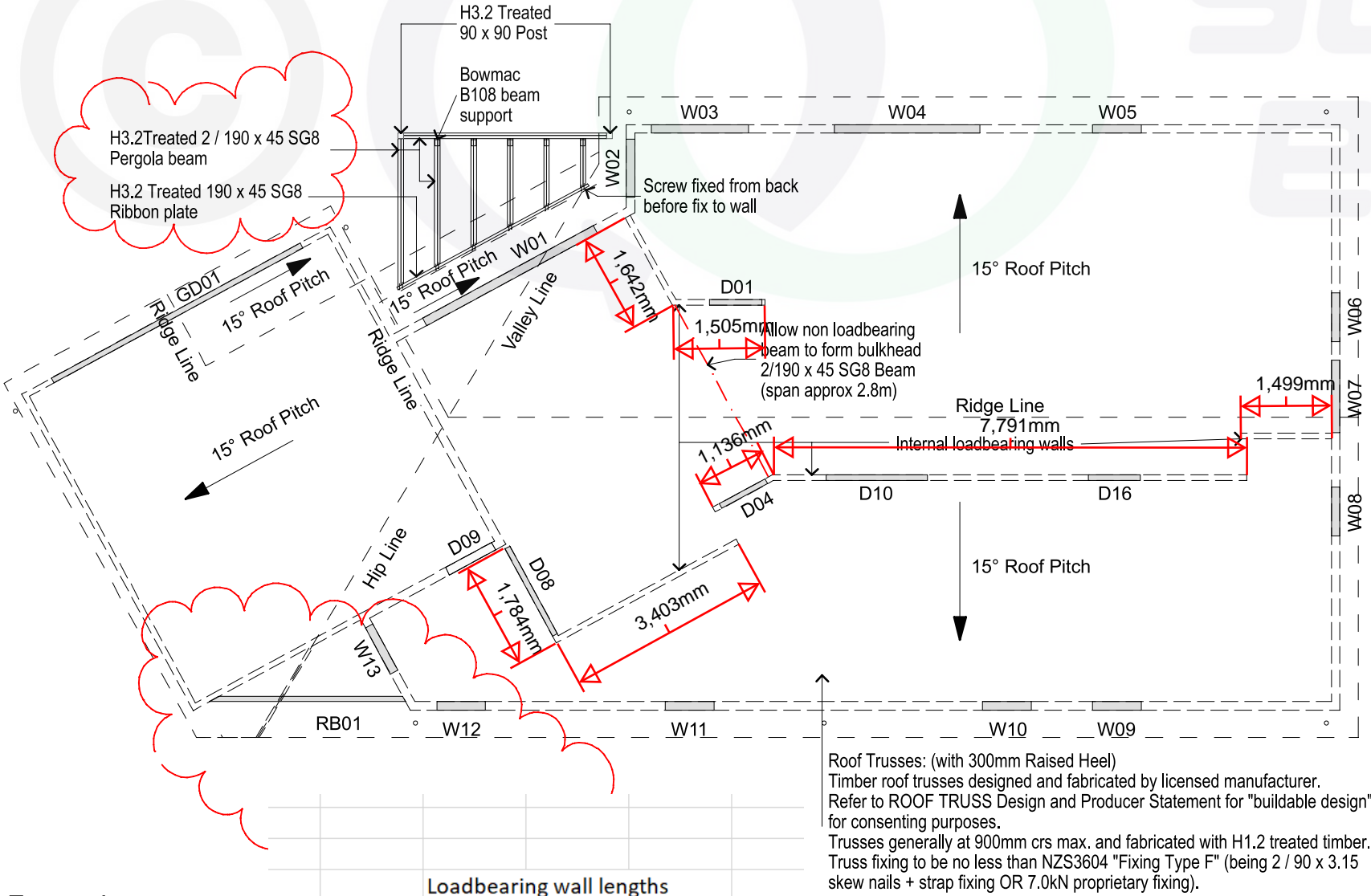
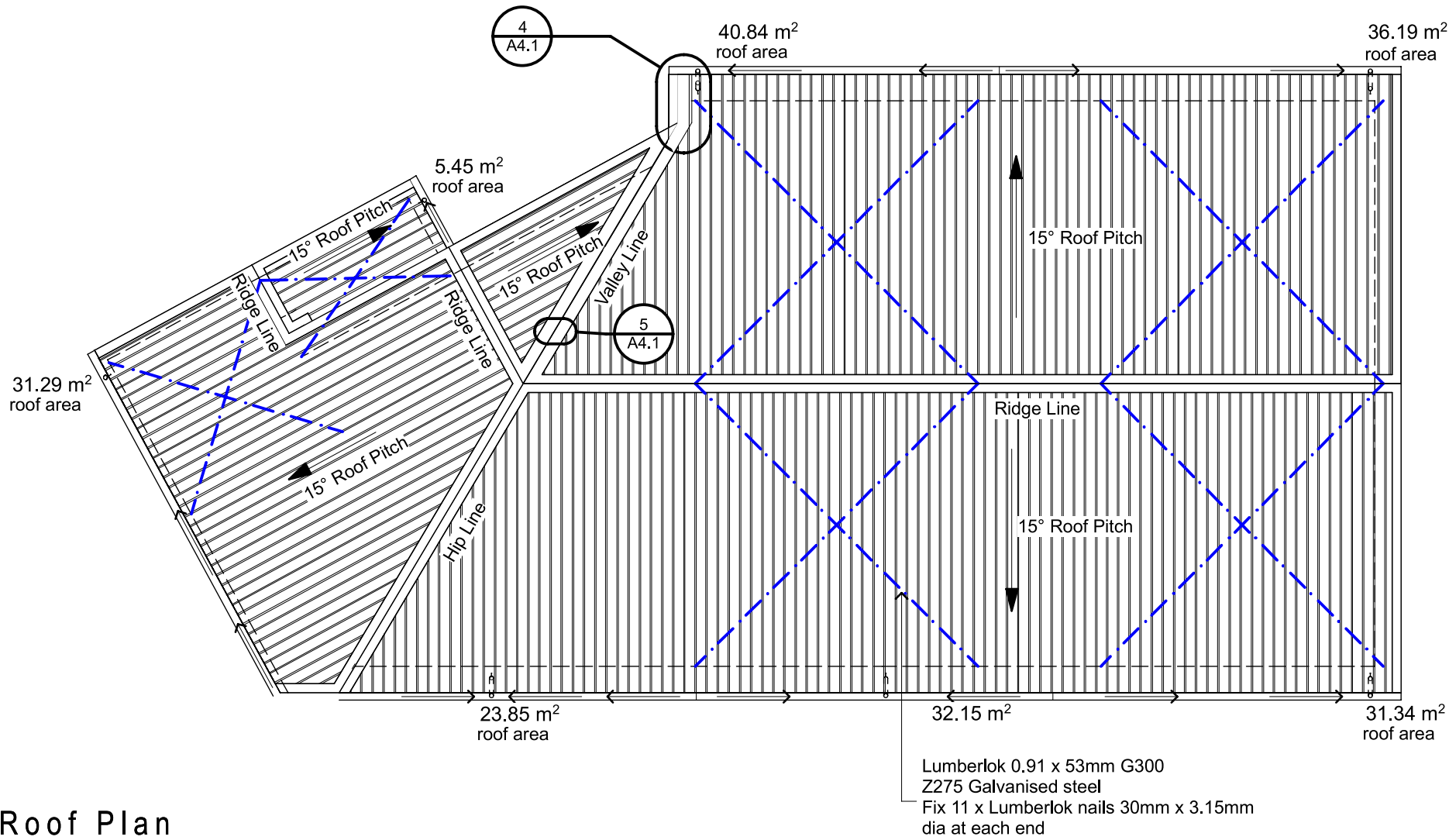
fw = 1.1 multiplying factor for WIND (roof freely exposed and pitch > 10°)  
fri = 1.0 multiplying factor for RAINFALL INTENSITY (RI = 40mm/hr NZS 3604 min is 100mm/hr)  
frp = 1.1 multiplying factor for ROOF PITCH (15° roof pitch)  
CA Max Catchment Area = 41 m²

Adjusted CA CA x fw 45.1 x 1.1 = 49.61

multiply by fri and frp 49.61x1.0x1.1 = 54.571 m²

for external spouting multiply by 100mm² = 5457.1mm² cross sectional area

Quad Spouting profile has a cross sectional area of 5621mm² so is suitable to use.



LINTEL and BEAM SCHEDULE					
LINTEL LABEL	SPAN of LINTEL	LINTEL LOAD TYPE	LD	LINTEL SIZE	LINTEL FIXING
W01	3.2m	DesignIT	<4.0m	2/240x45 hySPAN	NZS 3604 - Fig 8.12
W02	0.96m	Roof only - Table 8.9	<2.0m	2/90x45 SG8	NZS 3604 - Table 8.19
W03	1.6m	Roof only - Table 8.9	<6.0m	2/140x45 SG8	NZS 3604 - Fig 8.12
W04	2.4m	Roof only - Table 8.9	<6.0m	2/240x45 SG8	NZS 3604 - Fig 8.12
W05	0.8m	Roof only - Table 8.9	<6.0m	2/90x45 SG8	NZS 3604 - Table 8.19
W06	0.8m	Roof only - Table 8.9	<2.0m	2/90x45 SG8	NZS 3604 - Table 8.19
W07	1.19m	Roof only - Table 8.9	<2.0m	2/90x45 SG8	NZS 3604 - Table 8.19
W08	0.8m	Roof only - Table 8.9	<2.0m	2/90x45 SG8	NZS 3604 - Table 8.19
W09	0.8m	Roof only - Table 8.9	<6.0m	2/90x45 SG8	NZS 3604 - Table 8.19
W10	0.8m	Roof only - Table 8.9	<6.0m	2/90x45 SG8	NZS 3604 - Table 8.19
W11	0.8m	Roof only - Table 8.9	<6.0m	2/90x45 SG8	NZS 3604 - Table 8.19
W12	0.8m	Roof only - Table 8.9	<6.0m	2/90x45 SG8	NZS 3604 - Table 8.19
W13	0.86m	Roof only - Table 8.9	<6.0m	2/90x45 SG8	NZS 3604 - Table 8.19
D01	0.86m	Roof only - Table 8.9	<6.0m	2/90x45 SG8	NZS 3604 - Table 8.19
D04	0.86m	Roof only - Table 8.9	<6.0m	2/90x45 SG8	NZS 3604 - Table 8.19
D08	1.65m	Roof only - Table 8.9	<6.0m	2/190x45 SG8	NZS 3604 - Table 8.19
D09	0.86m	Roof only - Table 8.9	<6.0m	2/90x45 SG8	NZS 3604 - Table 8.19
D10	1.67m	Roof only - Table 8.9	<6.0m	2/190x45 SG8	NZS 3604 - Table 8.19
D16	0.86m	Roof only - Table 8.9	<6.0m	2/90x45 SG8	NZS 3604 - Table 8.19
GD01	4.66m	DesignIT	<2.0m	2/300x45 hySPAN	NZS 3604 - Fig 8.12
RB01	3.25m	SED	SED	2/190x45 SG8	Type G Mitek hold down fixing

Wind Zone = HIGH, Roof Weight = LIGHT, Cladding Weight = MEDIUM/LIGHT, Snow Zone = N4, Altitude = 16m, Snow Load = 1.0kPa